



Geraldine Road, London, W4  
Guide Price £1,095,000

**WHITMAN & CO.**  
SALES · LETTINGS · COMMERCIAL



A newly refurbished and extended, immaculately presented period terraced house located in the popular Strand on the Green area, moments from the River. The house has been finished to a very high standard, with the accommodation comprising a 24'4x14'1 reception room, a fully fitted kitchen/breakfast room including an island with a wine fridge, a landscaped west-facing garden, a guest cloakroom, three double bedrooms, a luxurious family bathroom with a separate shower and integrated TV, additional bathroom ensuite to the top floor bedroom and eaves storage. Geraldine Road is moments from Strand on the Green's picturesque riverside with its pubs, cafes and restaurants and within the catchment of Strand on the Green primary school. Chiswick High Road's extensive facilities are within walking distance, as is Kew Gardens. Transport links include Gunnersbury (Overground and District Line) Station, Kew Bridge (Mainline) Station, local bus routes and the A4/M4 for routes in and out of London.



# Geraldine Road, W4

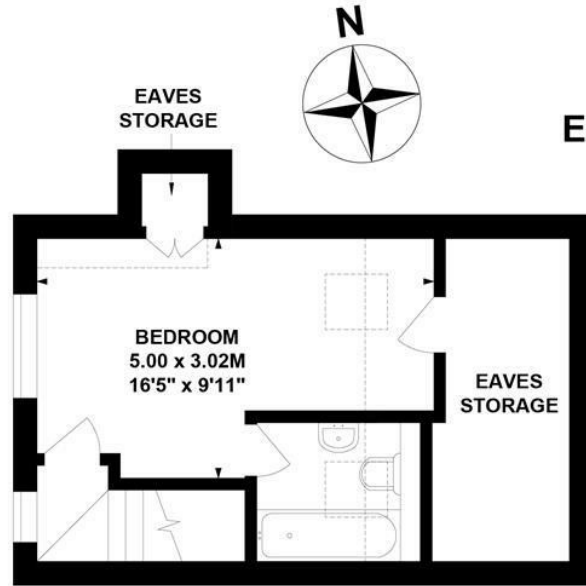
Approximate Gross Internal Area

112.82 sq m / 1214 sq ft

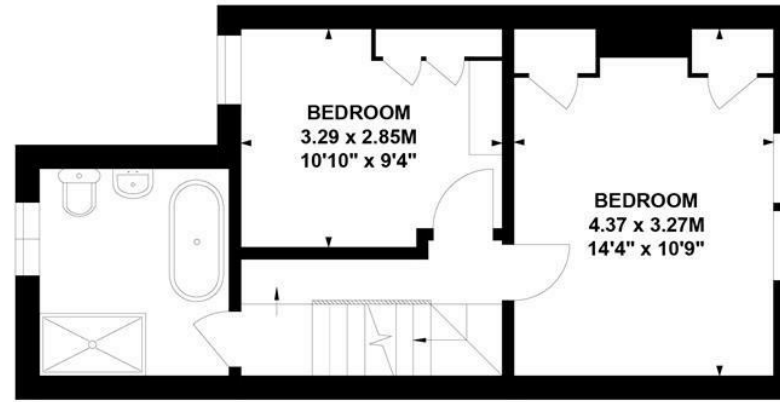
(Including Eaves Storage)

Eaves Storage : 7.20 sq m / 77 sq ft

Key :  
CH - Ceiling Height



Second Floor



First Floor



Ground Floor

Not to scale, for guidance only and must not be relied upon as a statement of fact.  
All measurements and areas are approximate only

- Newly refurbished and extended
- Landscaped west-facing garden
- Three beds/two baths

- 24'4x14'1 Reception room
- Fully fitted kitchen/breakfast room
- Sought after location

Tenure - Freehold  
Local Authority - Hounslow  
Council Tax - Band F

